

Missing Vowels

Can you identify the **missing vowel** in the words below? Each word is a **type of habitat that certain plants and animals call home**. Check out the image for a clue! Choose your vowel from *The Vowel Bank*. Each vowel will be used once.



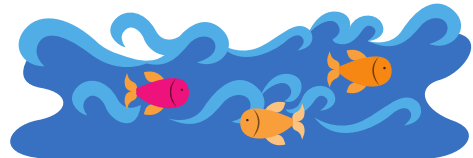
J **N G L E**



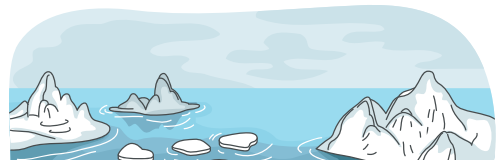
F **R E S T**



O C E **N**



A R C T **C**



D **S E R T**



Now, let's take a look at the next page to learn about these habitats!



SCIENCE Corner



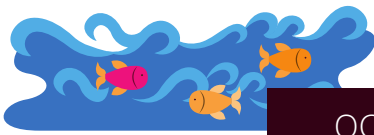
JUNGLE

Rainforests are warm and wet habitats. Trees in the **rainforest** grow very tall because they have to compete with other plants for sunlight! Sloths, monkeys and lots of birds call this place home and colorful flowers, palms, and trees thrive here!



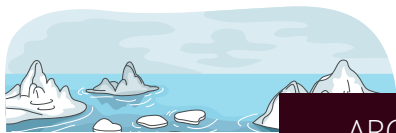
FOREST

The **forest** temperature changes with the seasons, so animals that live here, like birds, bears, and insects have to adapt to the changing weather. Forests are also home to many different unique trees with leaves that change colors in the fall.



OCEAN

More than 70% of the Earth's surface is covered by **oceans**! Oceans like the Pacific and Atlantic are deep and wide. There are so many amazing creatures in our oceans like whales, dolphins, colorful fish, algae, oysters and seahorses...to name a few!



ARCTIC

The **arctic** is frigid and surrounded by ice and covers the top and bottom of planet Earth at the North and South Poles. Polar bears have thick fur to keep them warm here and penguins, walruses and humpback whales can tolerate the chilly ocean temperatures.



DESERT

Deserts are the driest places on Earth—they get fewer than 10 inches of rain a year! Some animals you might find in the **desert** are camels, rattlesnakes and meerkats. Plants, like the cactus, store enough water in their stems to last until the next rain.